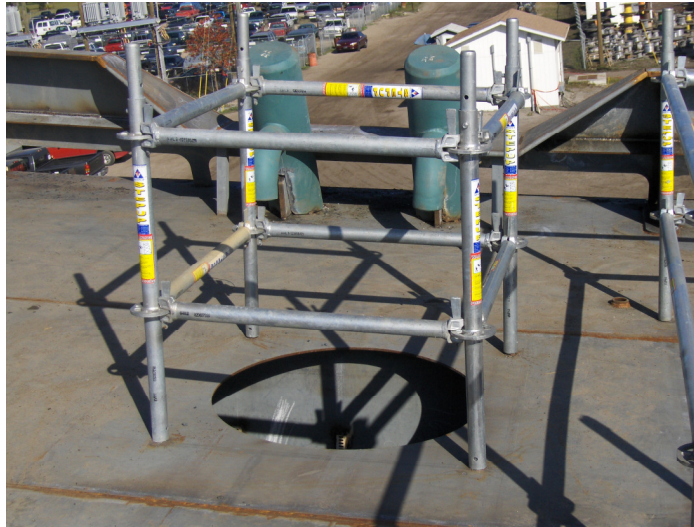


FEBRUARY SAFETY BULLETIN

GUARDING FLOOR OPENINGS, UNGUARDED EDGES, ETC.



Applicable OSHA compliance information:
1910.23 - Guarding floor and wall openings and holes
1915.73 - Guarding of deck openings and edges

Safety / Compliance Tips

- Flush manholes and other small openings must be covered or provided with a 30-inch-high guard.
- Open hatches must be protected by coamings of at least 24-inches-high or adequately guarded.
- Unguarded edges more than 5 feet above solid surfaces require guardrails.
- When bilges, plates, or flooring are removed, guardrails or adequate flooring must be provided.
- Unguarded edges above water require guardrails, or workers must wear personal flotation devices (PDFs).
- Gratings, walkways, and catwalks, from which sections or ladders have been removed, must be barricaded with adequate guardrails.
- Toe-boards should be used to prevent tools and materials from falling to workers below.

**FOR MORE INFORMATION ON THIS TOPIC OR IF YOU HAVE
QUESTIONS PLEASE CONTACT YOUR AEU LOSS CONTROL
REPRESENTATIVE 866-AEU-8754**

Real World. World Class.

The recommendations, observation, or material provided by The American Equity Underwriters, Inc., are to assist you in your loss control activities. They cover only conditions and practices observed and considered at the time of contact. No responsibility is assumed for the discovery and elimination of hazards, which could possibly cause accidents or damage. Compliance with any submitted recommendations in no way guarantees the fulfillment of your obligations as may be required by local, state or federal laws.